

# JOIN US



CENTER FOR THE PERFORMING ARTS  
**@ PENN STATE**

PENNSTATE



University  
Park

# Who we are

The Center for the Performing Arts—part of Penn State’s College of Arts and Architecture—presents a diverse series of professional touring performances, organizes a broad program of educational activities, commissions works, manages two facilities, and provides production, ticketing, and audience services for the University Park campus and community organizations in numerous venues.

Center for the Performing Arts programs incorporate a broad array of music, dance, and theatre presentations for all ages. The Center for the Performing Arts has a distinguished history of commissioning works and hosting artists in creative residencies.

Education programs that serve the University and community include master classes, school-time matinees, workshops, symposiums, and *Artistic Viewpoints*, a moderated discussion prior to most presentations.

The Center for the Performing Arts manages Eisenhower and Schwab auditoriums, using them for its own presentations and supporting the events of University and community organizations. Production and audience services support these and other University venues.

The Arts Ticket Center operates locations at Eisenhower and HUB-Robeson Center at University Park and at the Penn State Downtown Theatre Center in State College.

One of Pennsylvania’s major cultural resources, the Center for the Performing Arts is recognized among the top tier of university performing arts centers in the United States.

## Membership benefits

**Members receive a host of exclusive benefits, including:**

- **Advance notice and ticket purchase privilege;**
- **Recognition in performance programs and in Eisenhower Auditorium lobby;**
- **Meet-the-artists opportunities;**
- **Invitations to members-only receptions and other events;**
- **VIP ticketing and premium seating access;**
- **Tickets for friends;**
- **Preferred or reserved parking.**

*Membership benefits vary by category. For a complete list of categories and benefits, see the enclosed list.*



# Seven reasons to join

- 1** Your membership will enable us to present an artist whose performance will touch many in the audience but will inevitably be a life-changing experience for at least one.
- 2** Your membership will assist in bringing a music duo that fills our hall—and your life—with beauty.
- 3** Your membership will go a long way toward offering a sizzling jazz trio with the most infectious sound this side of New York City.
- 4** Your membership will help to commission one of America's leading composers to create new music for a fabulous string quartet.
- 5** Your membership will aid in creating five activities in which people of various ages and from many walks of life get to move with members of a dance company.
- 6** Your membership will lend a hand in making it affordable for 600 children from six central Pennsylvania counties to experience their first professional musical theatre show.
- 7** Your membership will mean that seven times seven music majors will be able to sit on a stage with a virtuoso and learn from a master.



# MEMBERS MAKE IT HAPPEN

**Extraordinary artistry** • Help bring the world to our stages—season after season—through a variety of performances by renowned artists.

**Connecting the arts to schools** • Support school-time performances that engage thousands of children.

**First experiences** • Make it possible for people of all ages to experience the magic of live performance for the first time.

**Creative engagement** • Sustain the education program that engages the University and community in many ways, including master classes, workshops, mini performances, and more.

**New works** • Assist in bringing new music, dance, and theatre works to life, and share in the enjoyment of their Center for the Performing Arts premieres.

**Specialized programs** • Help us open the world of the performing arts to a broader audience through programs that provide assisted listening, audio description, sign language interpretation, and other accessibility services.

## **Members make a difference.**

About 65 percent of Center for the Performing Arts income comes from ticket sales revenue combined with Penn State support. Membership support makes a real difference in the programs the Center for the Performing Arts is able to offer to the community.

## **Your support is the bridge that brings artists and audiences together.**

When you become a member of the Center for the Performing Arts, you join hundreds of people who believe the performing arts are important to the vitality of our region and who share our mission of *enriching lives through inspiring experiences*.

**Make it happen. Make a difference. Please join us.**



# IN THEIR OWN WORDS

"I am always so excited to see the schedule of performances for each new season. Our array of choices matches those offered in other major performing arts centers. Being a member will help to ensure that these wonderful performers continue coming here."

*Patricia Hawbaker Quinlivan*

"Members are more than just spectators; they have the opportunity to get involved. Support of the arts makes us feel good."

*Honey and Bill Jaffe*

"We recognize that without the financial support of many, it would be impossible for high-quality programming to continue to be offered. It is very meaningful to us, as well as to children, Penn State students, and all other adults in the surrounding region, to be able to attend performances by world-renowned musicians and performers. We will support the Center for the Performing Arts to the highest level of our ability."

*Glenn and Nancy Gamble*

"Membership in the Center for the Performing Arts provides you with a key to open the door to world-class performing artists in your own backyard. Membership is a strong statement that you believe what the center provides is a critical component in the quality of your life here in central Pennsylvania. Open the door. Become a member."

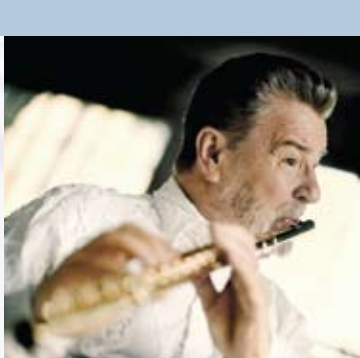
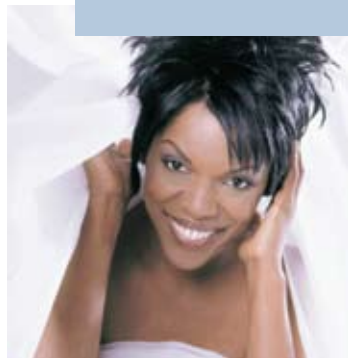
*Robert L. Martin, Esq.*

"We became members the first year we moved to State College. Besides supporting the arts, our membership afforded us the opportunity to meet people with similar interests, and the special events allow us to socialize with people we might never know. It's been very rewarding."

*Helen and Bob Harvey*

"Living in Clearfield County, we have been pleased to discover the wide variety of entertainment opportunities that the Center for the Performing Arts provides so close to home. It is very comparable to what we experienced living close to Orlando for many years."

*Tom and Leesa Folmar*



# OUR MEMBERSHIP CATEGORIES AND THE BENEFITS THEY INCLUDE

## **LEADERSHIP CIRCLE** (\$3,000 and more)

Invitation for two to an exclusive recognition event for Leadership Circle members

Reserved season parking space for Center for the Performing Arts presentations

Total of six tickets for friends to a performance of choice\*

*Plus benefits of Director's Circle*

## **DIRECTOR'S CIRCLE** (\$1,500 to \$2,999)

Name recognition in Eisenhower Auditorium lobby

Invitation for two to an exclusive recognition event for Director's Circle members

Season access to preferred parking for Center for the Performing Arts presentations

Total of four tickets for friends to a performance of choice\*

*Plus benefits of Encore Circle*

## **ENCORE CIRCLE** (\$1,000 to \$1,499)

VIP ticket office assistance, including access to premium seating

Two tickets for friends to a performance of choice\*

*Plus benefits of Advocate*

## **ADVOCATE** (\$500 to \$999)

Invitation to the season celebration

Invitation to recognition luncheon with the director and an inside look at the Center for the Performing Arts

*Plus benefits of Friend*

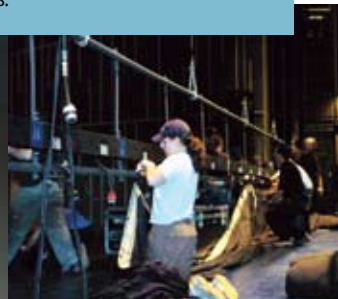
## **FRIEND** (\$250 to \$499)

Advance notice and pre-sale ticket opportunities for special events

*Plus benefits of Associate*

\* Based upon availability and contractual obligations. Value will be provided on gift receipt.

*See reverse side for other categories and benefits.*



### **ASSOCIATE** (\$150 to \$249)

Recognition in *OnStage*, our performance program

*Plus benefits of Affiliate*

### **AFFILIATE** (\$50 to \$149)

Opportunity to purchase Center for the Performing Arts tickets in advance of the general public

Receive advance notice via e-mail about special events, exclusive discount offers, and more

Receive notice via e-mail about each issue of *PreViews*, our online multimedia magazine

Recognition listing in the Center for the Performing Arts annual report

### **THE JAZZ TRAIN**

*A special membership category that helps to present world-class jazz artists.*

*With a gift of \$200 or more, the benefits include:*

Invitations to jazz performance-related receptions

Recognition in *OnStage*, our performance program

Opportunity to buy Center for the Performing Arts tickets in advance of the general public

Receive notice via e-mail about each issue of *PreViews*, our online multimedia magazine

Receive advance notice via e-mail about special events, exclusive discount offers, and more

Recognition listing in the Center for the Performing Arts annual report



For more information about membership, contact the office for special programs at **814-863-1167** or **cfpa@psu.edu**. Or visit our Web site at **www.cpa.psu.edu** and click on *join*.

Does your company match gifts to Penn State?  
To find out, visit **www.matching.psu.edu**.

This publication is available in alternative media on request.

The Pennsylvania State University is committed to the policy that all persons shall have equal access to programs, facilities, admission, and employment without regard to personal characteristics not related to ability, performance, or qualifications as determined by University policy or by state or federal authorities. It is the policy of the University to maintain an academic and work environment free of discrimination, including harassment. The Pennsylvania State University prohibits discrimination and harassment against any person because of age, ancestry, color, disability or handicap, national origin, race, religious creed, sex, sexual orientation, gender identity, or veteran status. Discrimination or harassment against faculty, staff, or students will not be tolerated at The Pennsylvania State University. Direct all inquiries regarding the nondiscrimination policy to the Affirmative Action Director, The Pennsylvania State University, 328 Boucke Building, University Park PA 16802-5901; tel. (814) 865-4700/V, (814) 863-1150/TTY. U.Ed. ARC 08-212

